

# Customer Information Sheet

DRAWING No:- M80-867XXXX

SHEET 2 OF 2 IF IN DOUBT - ASK

(C)

NOT TO SCALE

THIRD ANGLE PROJECTION

ALL DIMENSIONS IN mm

COMMERCIAL  
ORDER CODE:

**M80-867XXXX**

TOTAL No. OF WAYS

04, 06, 08, 10, 12, 14, 16,  
18, 20, 26, 34, 44

FINISH

05 - GOLD  
06 - TIN/LEAD  
22 - SELECTIVE GOLD

BRITISH STANDARD

ORDER CODE: TO BS9525 F0033

**B5743-2XX-M-T-X**

TOTAL No. OF WAYS

04, 06, 08, 10, 12, 14, 16,  
18, 20, 26, 34, 44

FINISH

1 - SELECTIVE GOLD  
3 - GOLD

NOTES.

- 2-OFF STRAIN RELIEF STRAP M80-0030006 MAY BE USED WITH THIS CONNECTOR.

## SPECIFICATIONS:

### MATERIAL:

MOULDING - GLASS-FILLED  
POLYESTER UL94V-0

CONTACT - PHOSPHOR BRONZE

LATCH - BERYLLIUM COPPER

### FINISH:

#### CONTACTS:

05 - 0.75μ GOLD  
06 - 3.0μ 90/10 TIN/LEAD  
22 - 0.75μ GOLD ON CONTACT AREA,  
3.0μ 90/10 TIN/LEAD ON TAILS

LATCH - 1.25μ NICKEL

### MECHANICAL:

DURABILITY - 500 OPERATIONS

### PACKING:

TUBE

### ELECTRICAL:

CURRENT RATING AT 25°C - 3.0A MAX  
CURRENT RATING AT 85°C - 2.2A MAX

WORKING VOLTAGE - 120V AC/DC

VOLTAGE PROOF - 360V AC/DC

CONTACT RESISTANCE (INITIAL) -  
20 MILLIOHMS MAX

CONTACT RESISTANCE (AFTER  
CONDITIONING) - 25 MILLIOHMS MAX

INSULATION RESISTANCE (INITIAL) -  
1000 MEGOHMS MIN

INSULATION RESISTANCE (AFTER  
CONDITIONING) - 100 MEGOHMS MIN

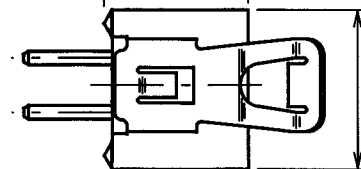
### ENVIRONMENTAL:

TEMPERATURE RANGE - -55°C TO +125°C

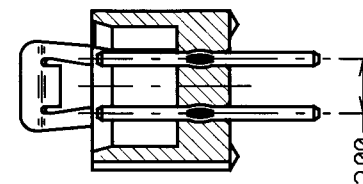
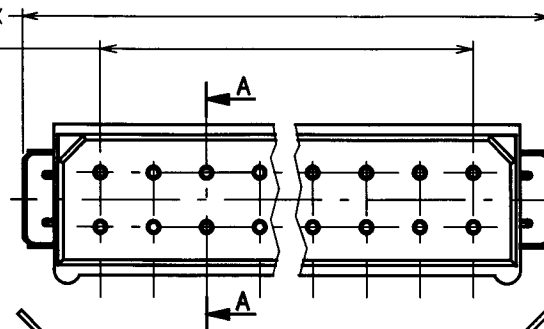
2.00 x No. OF WAYS PER ROW + 4.00 MAX

2.00 x No. OF PITCHES PER ROW

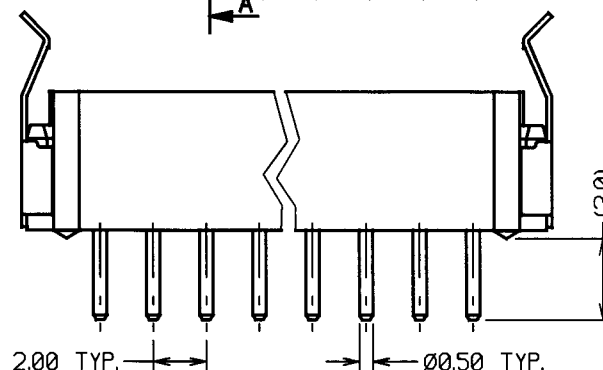
5.56 MAX.



5.98 MAX.

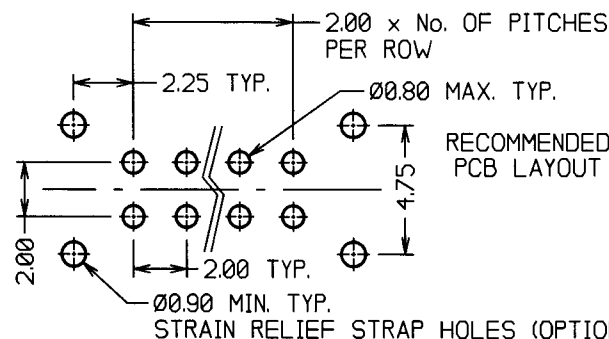


SECTION A-A



2.00 TYP.

Ø0.50 TYP.

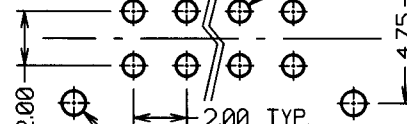


2.00 x No. OF PITCHES  
PER ROW

2.25 TYP.

Ø0.80 MAX. TYP.

RECOMMENDED  
PCB LAYOUT



2.00

2.00 TYP.

Ø0.90 MIN. TYP.

STRAIN RELIEF STRAP HOLES (OPTIONAL)

9 06.11.98 4630

ISS. DATE C/N

APPROVED: *[Signature]*

CHECKED: *[Signature]*

DRAWN: W. J. BOURNE

CUSTOMER REF.

ASSEMBLY DRG:

FOR COMPLETE SPECIFICATION, SEE COMPONENT SPECIFICATION C005XX (LATEST ISSUE)

# HARWIN

HARWIN INC  
U.S.A.

TEL: (812) 285 0055  
FAX: (812) 285 0056

HARWIN PLC  
U.K.

TEL: 01705 370451  
FAX: 01705 314590

HARWIN PTE  
SINGAPORE

TEL: 65 7794909  
FAX: 65 7793868

### TOLERANCES

X. - ±1mm  
X.X - ±0.25mm  
X.XX - ±0.10mm  
X.XXX - ±0.01mm  
ANGLES - ±1°  
UNLESS STATED

### MATERIAL:

SEE ABOVE

FINISH: SEE ABOVE

S/AREA: mm²

TITLE: DATAMATE 2mm PITCH  
VERTICAL PC TAIL DIL PLUG  
ASSEMBLY - LATCHED

DRAWING NUMBER:

**M80-867XXXX**

SHT  
2  
OF 2